

Highlights

- Integrated cavity design, guaranteeing superior performance and reliability.
- Full band up to 4.2GHz, covering 5G systems.
- Lower PIM, -160dBc @ 20w, tested on each port and each frequency band.
- Customized products are available.
- IP67 protection ensures stable performance in any environment.



MODELS

4.3-10 Type	N Type	Coupling Values	Insertion Loss	Distribution Loss
T5C742-M6	T5C742-N6	5dB±1.5dB	≤0.9dB	≤1.65dB
T6C742-M6	T6C742-N6	6dB±1.5dB	≤0.7dB	≤1.26dB
T7C742-M6	T7C742-N6	7dB±1.5dB	≤0.5dB	≤0.97dB
T8C742-M6	T8C742-N6	8dB±1.5dB	≤0.25dB	≤0.75dB
T10C742-M6	T10C742-N6	10dB±2.0dB	≤0.25dB	≤0.46dB
T13C742-M6	T13C742-N6	13dB±2.0dB		≤0.46dB
T15C742-M6	T15C742-N6	15dB±2.0dB		≤0.14dB
T20C742-M6	T20C742-N6	20dB±2.0dB	≤0.15dB	≤0.04dB
T25C742-M6	T25C742-N6	25dB±2.5dB		≤0.04dB
T30C742-M6	T30C742-N6	30dB±2.5dB		≤0.04dB
T35C742-M6	T35C742-N6	35dB±2.5dB		≤0.04dB
T40C742-M6	T40C742-N6	40dB±2.5dB		≤0.04dB

ELECTRICAL SPECIFICATIONS

Frequency	698-4200MHz
Intermodulation	≤-160dBc (IMD3 with 2×20W)
VSWR	≤1.3
Impedance	50Ω
Power Handling	300w Average

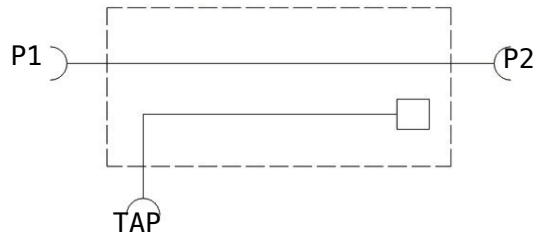
ENVIRONMENT SPECIFICATIONS

Operating Temperature	-25°C to +75°C -13°F to +167°F
Storage Temperature	-40°C to +85°C -40°F to +185°F
Relative Humidity	Up to 95%
Application	Indoor or Outdoor (IP67)

MECHANICAL SPECIFICATIONS

Color	Black or Gray
Connectors	4.3-10 Female or N Female or DIN Female
Weight	0.21Kg 0.46lb
Dimensions	60*25*25mm 2.36*0.98*0.98in

Block Diagram



Outline Drawing

