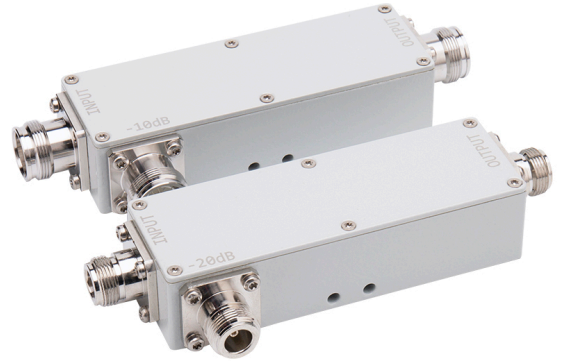


### Highlights

- Integrated cavity design, guaranteeing superior performance and reliability.
- Full band up to 3.8GHz, covering 5G systems.
- Lower PIM, -160dBc @ 20w, tested on each port and each frequency band.
- Customized products are available.
- IP67 protection ensures stable performance in any environment.



### MODELS

4.3-10 Type	N Type	Coupling Values	Attenuation	Insertion Loss	Isolation
V5C338-M6P	V5C338-N6P	5dB	±1.0dB	≤1.75dB	≥22dB
V6C338-M6P	V6C338-N6P	6dB		≤1.7dB	≥23dB
V7C338-M6P	V7C338-N6P	7dB		≤1.4dB	≥24dB
V8C338-M6P	V8C338-N6P	8dB		≤1.4dB	≥25dB
V10C338-M6P	V10C338-N6P	10dB	±1.2dB	≤0.7dB	≥26dB
V13C338-M6P	V13C338-N6P	13dB		≤0.6dB	≥28dB
V15C338-M6P	V15C338-N6P	15dB		≤0.5dB	≥30dB
V20C338-M6P	V20C338-N6P	20dB		≤0.4dB	≥35dB
V25C338-M6P	V25C338-N6P	25dB	±1.5dB	≤0.3dB	≥40dB
V30C338-M6P	V30C338-N6P	30dB		≤0.2dB	≥45dB
V35C338-M6P	V35C338-N6P	35dB			≥50dB
V40C338-M6P	V40C338-N6P	40dB			≥55dB

### ELECTRICAL SPECIFICATIONS

Frequency	340-3800MHz
Intermodulation	≤-160dBc (IMD3 with 2×20W)
VSWR	≤1.3
Impedance	50Ω
Power Handling	300w Average

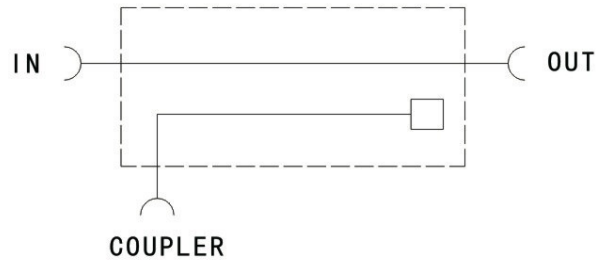
### ENVIRONMENT SPECIFICATIONS

Operating Temperature	-25°C to +75°C   -13°F to +167°F
Storage Temperature	-40°C to +85°C   -40°F to +185°F
Relative Humidity	Up to 95%
Application	Indoor or Outdoor (IP67)

### MECHANICAL SPECIFICATIONS

Color	Black or Gray
Connectors	4.3-10 Female or N Female or DIN Female
Weight	0.85Kg   1.87lb
Dimensions	140*44.5*29.5mm   5.51*1.75*1.16in

### Block Diagram



### Outline Drawing

